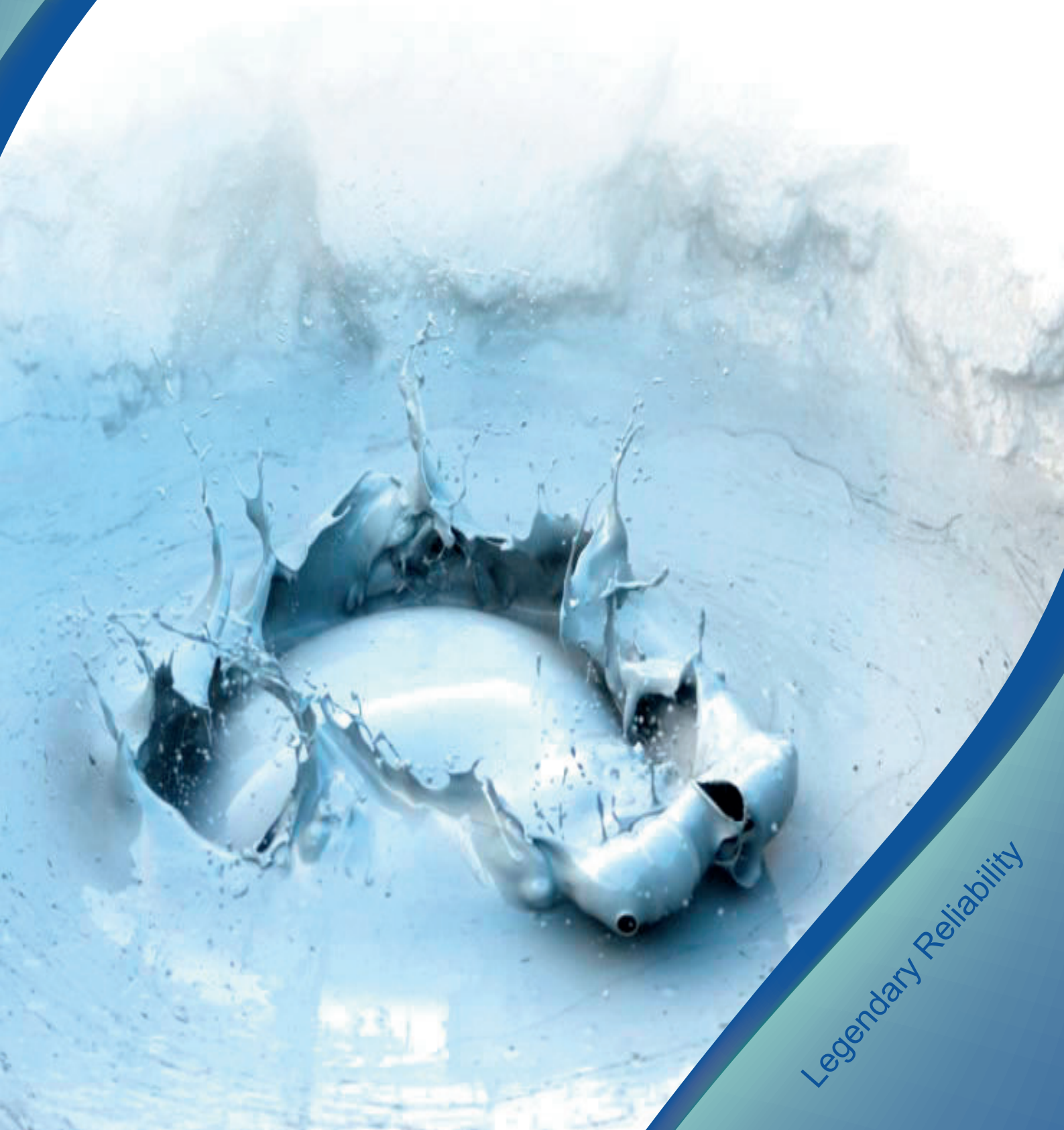




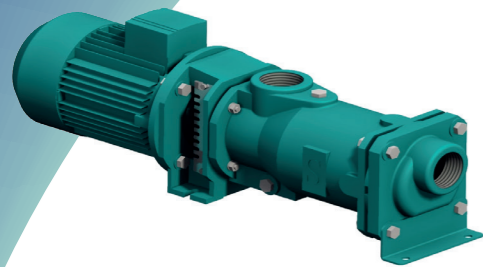
## Progressing Cavity Pumps Delivery Program Overview



Legendary Reliability

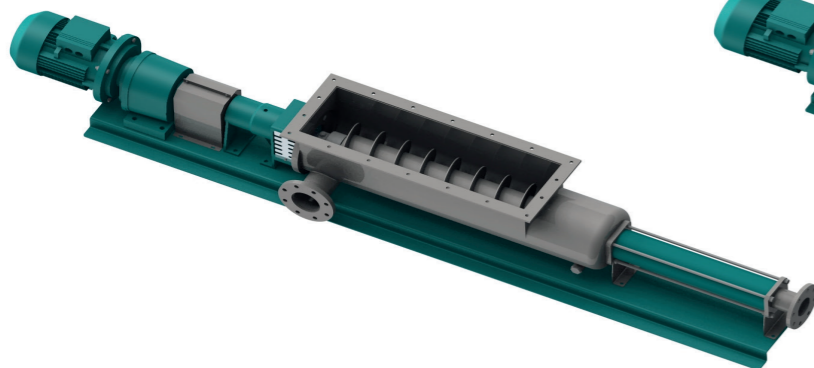
### FM-S & FM-C Range Free Moulded Pump

Compact and versatile  
Capacity: up to 18.000 l/h  
Pressure: up to 4 bar



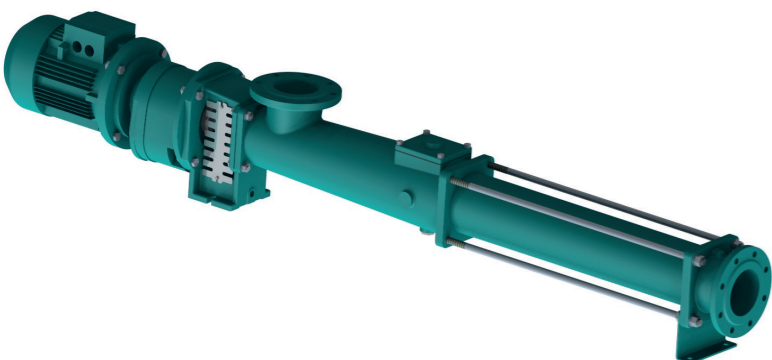
### G Range Large Hopper pump

The G Range was especially developed  
for pumping viscous and no fluidity products.  
Capacity: up to 40 m<sup>3</sup>/h  
Pressure: up to 48 bar



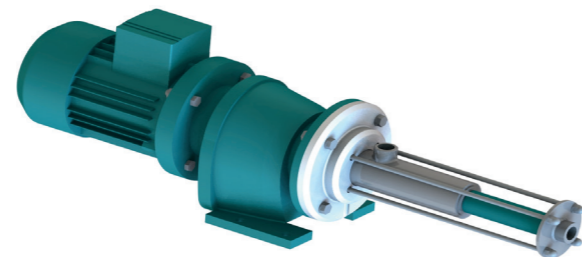
### K Range Standard Pump

The K Range is the state of the art  
in manufacturing concepts  
Capacity: up to 250 m<sup>3</sup>/h  
Pressure: up to 48 bar



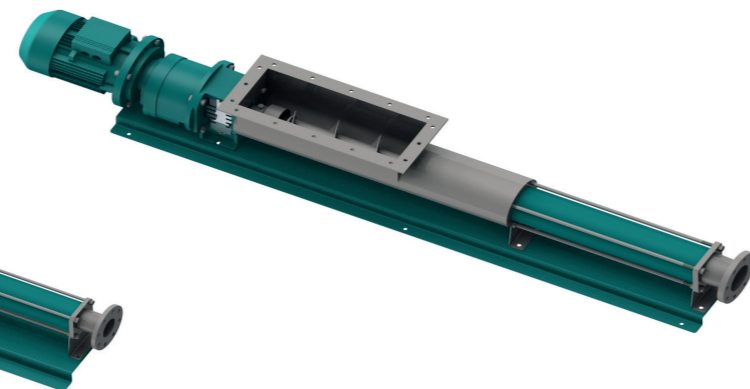
### M Range Metering Pump

The M Range is used for metering different kind of liquids.  
High accuracy and low pulsation.  
Capacity: from 3 l/h up to 200 l/h  
Pressure: up to 18 - 24 - 36 bar



### W Range Hopper Pump

The W Range was especially developed  
for pumping viscous products.  
Capacity: from 500 l/h up to 80-100 m<sup>3</sup>/h  
Pressure: up to 48 bar



### SMP Range Fully Submersible Pump

A submersible pump, new development  
suitable for dirty water, sewage and  
sludge containing fibrous or solid materials.

Capacity: up to 3000 l/h  
Pressure: up to 6 bar



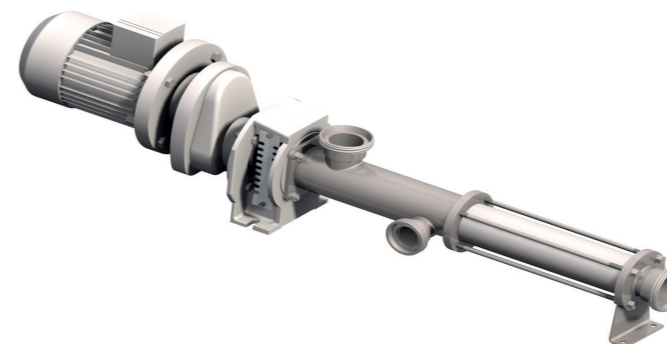
### Integral Macerator Pump Unit

Safe and reliable grinder-macerator pump unit  
with basic construction in both cast iron or stainless steel.  
Flow rate : 3600 l/h  
Pressure : up to 6 bar



### H Range Hygienic pump

The H Range is used mainly to apply in the food,  
pharmaceutic and chemical industry.  
Capacity: up to 100 m<sup>3</sup>/h  
Pressure: up to 12 - 24 bar



### WL Range

Wide hopper pumps used to transfer grapes / wine  
Complete structure in SS.304 1.4307 material.  
This range is developed in 5 different types:  
065 , 075 , 091 , 102 and 130  
Capacity : from 10 up to 90/100 m<sup>3</sup>/h  
Pressure : up to 6 - 12 bar



### E Range Vertical Pump

The E Range was projected  
to work in a vertical stance.  
Capacity: up to 150 m<sup>3</sup>/h  
Pressure: up to 12 bar  
"Possible dedicated  
pressure/flow level on demand"





**Sydex srl**  
Via Lord Baden Powell, 24  
36045 Lonigo  
Vicenza-Italy  
Telephone: +39 0444 432 588  
[www.sydexpump.com](http://www.sydexpump.com)



### Sydex USA

9302 Deer Run Rd.  
Waxhaw, NC 28173  
Telephone: 704.843.5048  
[www.sydexpumpusa.com](http://www.sydexpumpusa.com)

## BRANCH OFFICES

### Sydex Singapore Pte Ltd.

35 Tannery Rdod #05-06  
Ruby Industrial Complex  
Singapore347740  
Telephone: +65 6744 2823  
[www.sydex.com.sg](http://www.sydex.com.sg)

### Sydex Flow-Equipamentos Electromecanicos, Lda

Av.JosZ Alfonso, 77  
2840-75 Seizal  
Portugal  
Telephone: +351 933 725 654  
[www.sydexflow.com](http://www.sydexflow.com)

### Torqueflow-Sydex Ltd.

Unit 2CB, Deer Park Farm  
Industrial Estate  
Knowle Lane-Horton Heath  
Hampshire SO50 7PZ U.K.  
Telephone: +44 02380 007999  
[www.torqueflow-sydex.com](http://www.torqueflow-sydex.com)

Your local authorized distributor:

