



Griffco Valve Inc.
6010 N. Bailey Ave. Suite. 1B
Amherst, NY 14226
PH: 716 835-0891
FAX: 716 835-0893

G-SERIES PTFE FLANGED VALVE



Griffco G-Series diaphragm back pressure valves are designed to enhance the performance of chemical feed systems by applying a continuous back pressure to the chemical feed pump, while also acting as an anti-syphon valve. Robust construction ensures reliability in the rigorous service of sulphuric acid for both municipal and industrial applications. Wetted materials are: **PTFE**. Available sizes: 1/2" - 1".

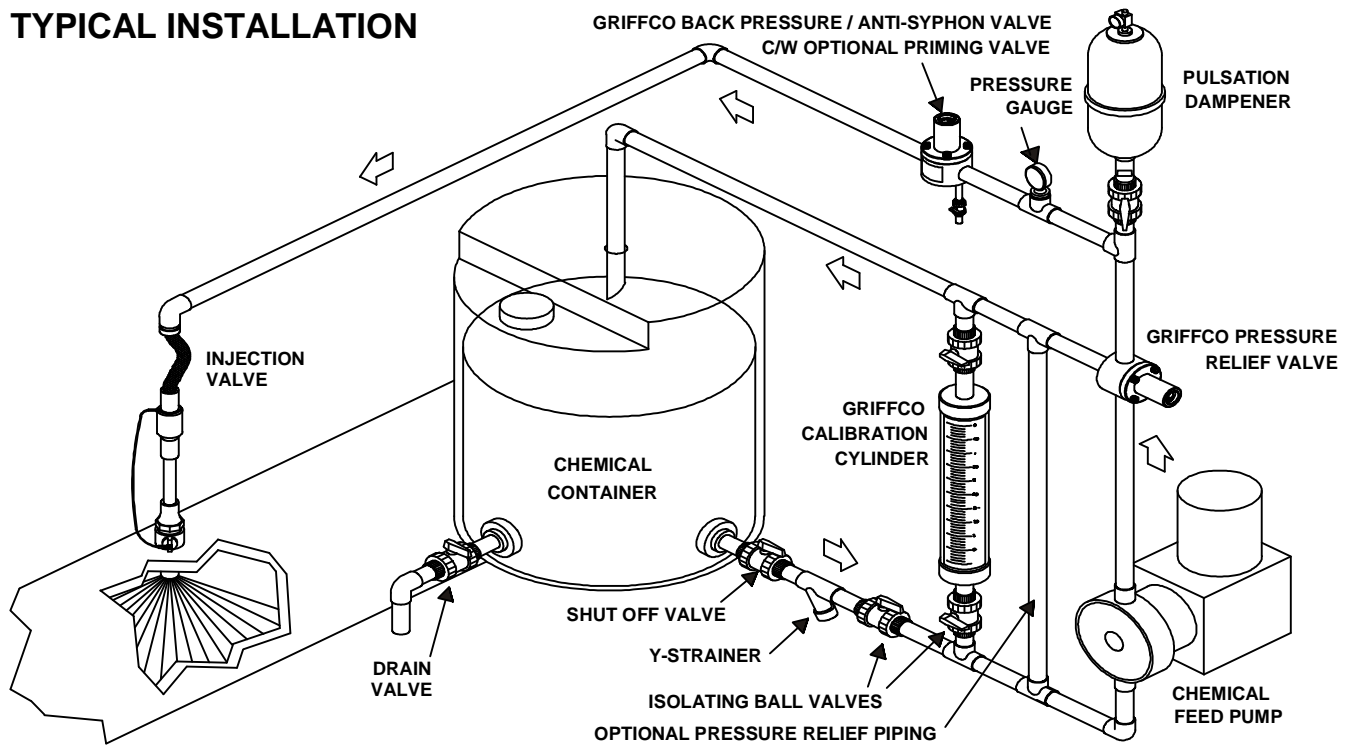
Features:

- One Piece Machined Construction
- High Reliability / Low Cost
- Molded PTFE/EPDM Diaphragm
- Adjustable 10 - 150 PSI
- Optional PSI Rated Valves
- Anti-Syphon Function
- Bottom Support Disc
- Tamper Resistant Adjustment Screw
- Molded Noryl Top

Operation:

Griffco diaphragm back pressure valves apply positive discharge pressure to a metering pump system to prevent siphoning and eliminate varying dosage rates caused by fluctuating downstream pressure. The diaphragm is held against the valve seat by an internal spring. When the preset pressure is exceeded, the diaphragm is forced up and chemical flows through the valve to the injection point. The valves are preset for 50 psi, however they are field adjustable from 10 - 150 psi via the adjustment screw. Installation should be as close to the injection point as possible to prevent chemical line drainage, and it is most important that all chemical system equipment such as pulsation dampeners and pressure gauges are between the pump and back pressure valve.

TYPICAL INSTALLATION

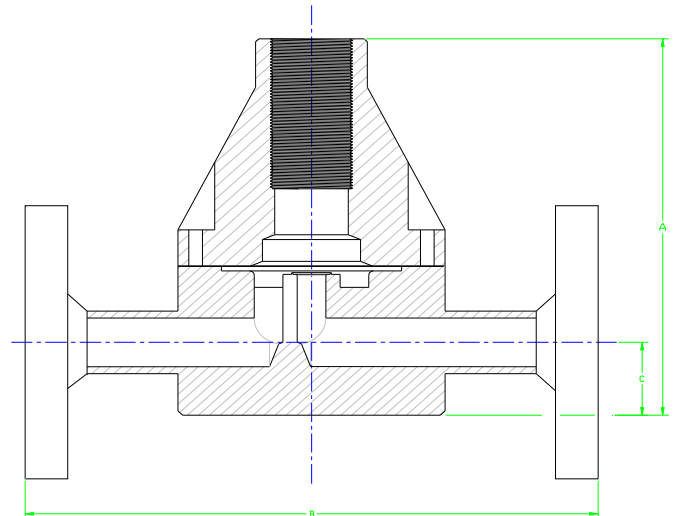
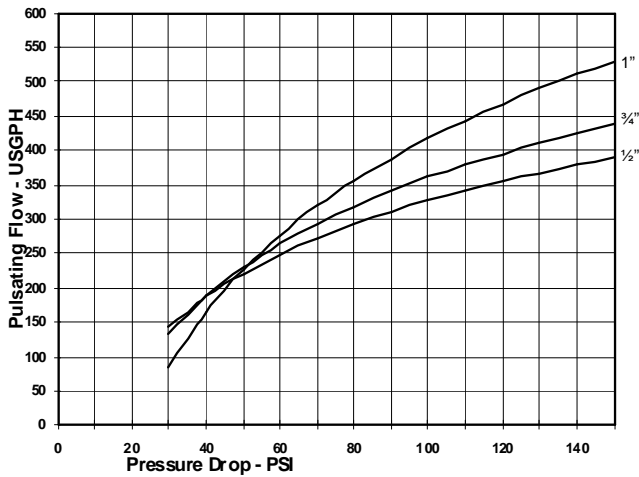


Technical Data:

Model BPG Sizes:		1/2", 3/4", 1"			
Connections:		Flange			
Pressure Adjustment		Standard: 10 - 150 psi; Optional: 0 - 50 psi			
Flow Rates @ 150 psi		Shipping Weight: lbs			
Size	Pulsating	Continuous	Plastic	Metal / Plastic Top	Metal / Metal Top
1/2"	300 USgph	21 USgpm	3.0	N/A	N/A
3/4"	300 USgph	21 USgpm	3.0		
1"	500 USgph	26 USgpm	3.5		
Max Temperature: (°F)		300°, (Peak 390°)			
Max Operating Pressure(psi) @ 70 Deg. F		Plastic/Noryl: 375 psi			
Materials of Construction:					
Diaphragm		PTFE / EPDM, Optional: Viton, Hypalon, & PTFE / Viton			
Valve Top		Noryl, Optional: 316 SS			
Valve Body		PTFE			

Dimensions:

Performance Curves:



Product Codes For Ordering Back Pressure Valves:

BPG

 1 2 3 4

1 = Size **2 = Material** **3 = Spring Opt** **4 = Options**
 050 - 1/2" T - PTFE 1 - 0 - 50 psi V - Viton Diaphragm
 075 - 3/4" F - Flange Connection
 100 - 1"

DIMENSIONS: BPG-SERIES			
All Materials			
Size	A(in)	B(in)	C(in)
1/2"	5.560	7.500	1.125
3/4"	5.560	7.500	1.125
1"	5.860	7.500	1.250

Email: sales@griffcovalve.com

Website: www.griffcovalve.com